



Patrero

S O U T H L A N D P A R K

WELCOME HOME



HOME

A HOME IS MORE THAN SQUARE FEET, BEDROOMS, AND BATHROOMS. IT'S A PLACE WHERE YOU BEGIN LIFE, CREATE MEMORIES, WHERE YOU LEARN, LOVE CREATE.

IT'S A PLACE WHERE STORIES ARE CREATED – A PLACE WHERE STORIES ARE TOLD.

IT'S A PLACE OF FIRSTS.

A PLACE TO WONDER, A PLACE TO DREAM.

A WARM BED YOU CAN'T GET OUT OF THE MORNING.

THE SOUND OF YOUR SPOUSE'S KEY IN THE DOOR AT THE END OF THE DAY.

IT'S THE SUN COMING THROUGH THE KITCHEN WINDOW EVERY MORNING

IT'S WHERE YOU'RE FROM, IT'S A PART OF YOU.

HOME IS YOUR BASECAMP FOR ALL YOUR ADVENTURES

A PLACE TO GATHER WITH FAMILY AND FRIENDS

IT'S A PLACE THAT IDENTIFIES YOU.

HOME IS MORE THAN A PLACE, IT'S A FEELING.

A HOME IS MORE THAN WALLS AND A ROOF – A HOME IS WHERE LIFE HAPPENS. IT'S WHERE YOU LIVE!

FOR MORE INFO ABOUT US, PLEASE VISIT:

POTREROSAC.COM

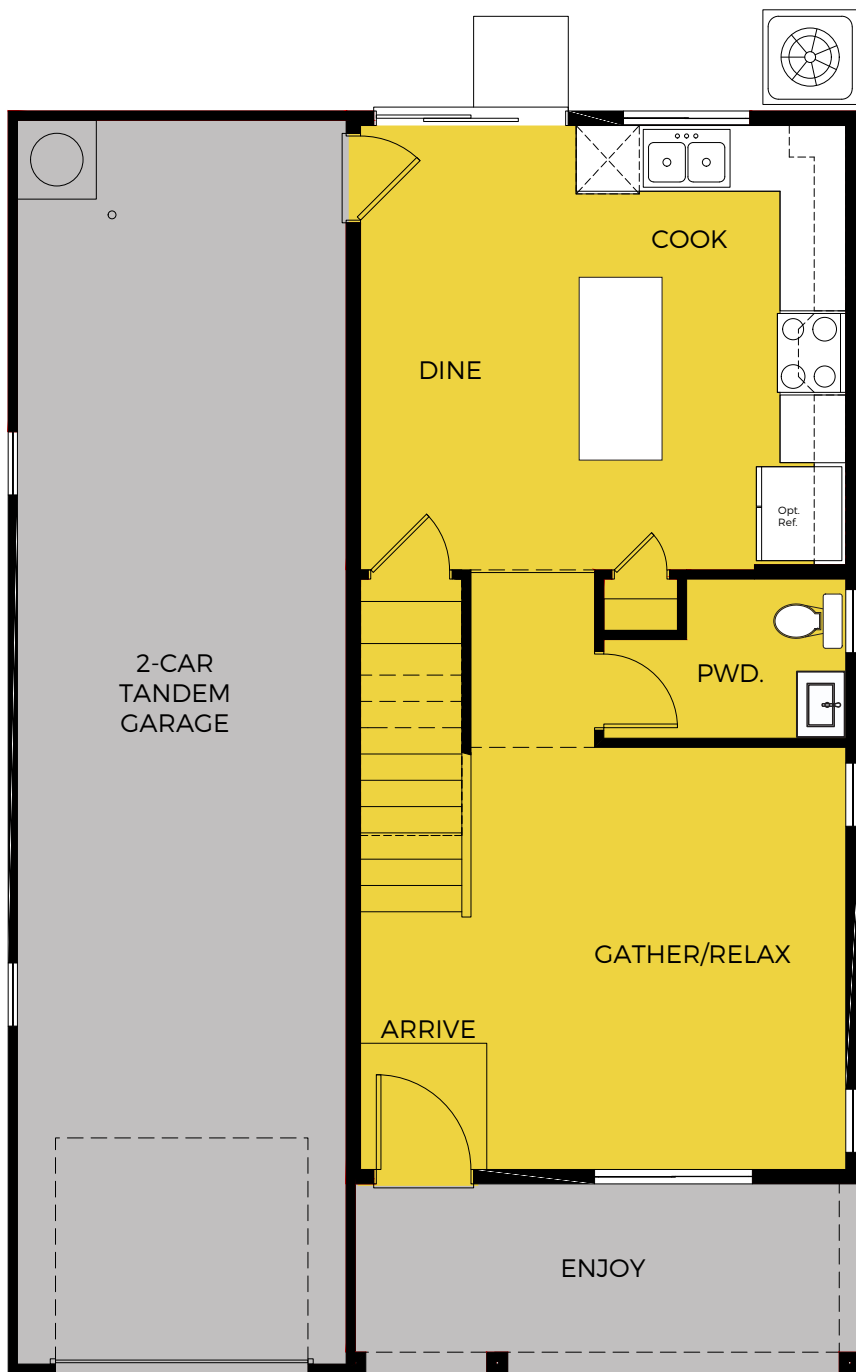


PLAN 1

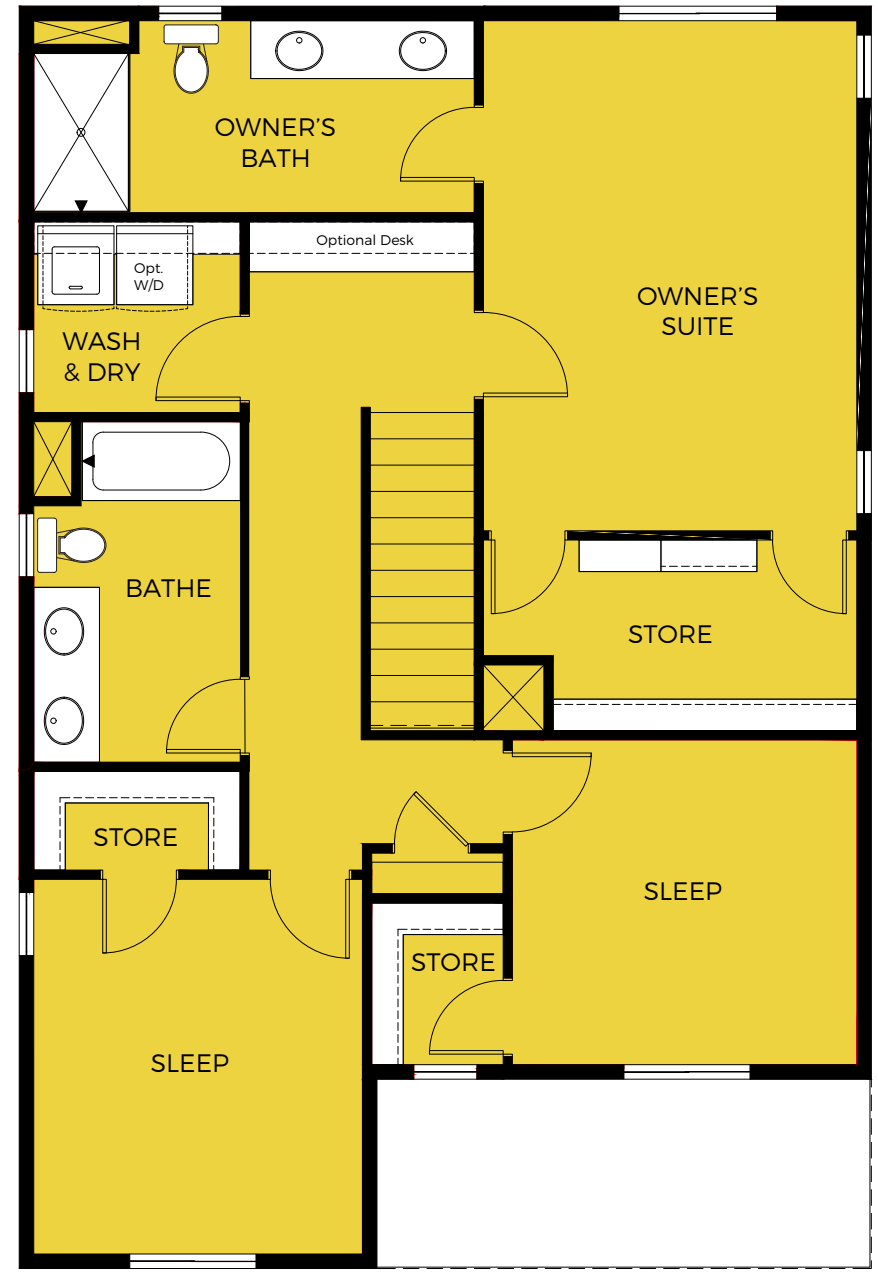
THREE BEDROOMS
TWO & 1/2 BATHS
1,540 SQUARE FEET
2-CAR TANDEM GARAGE



First Floor



Second Floor

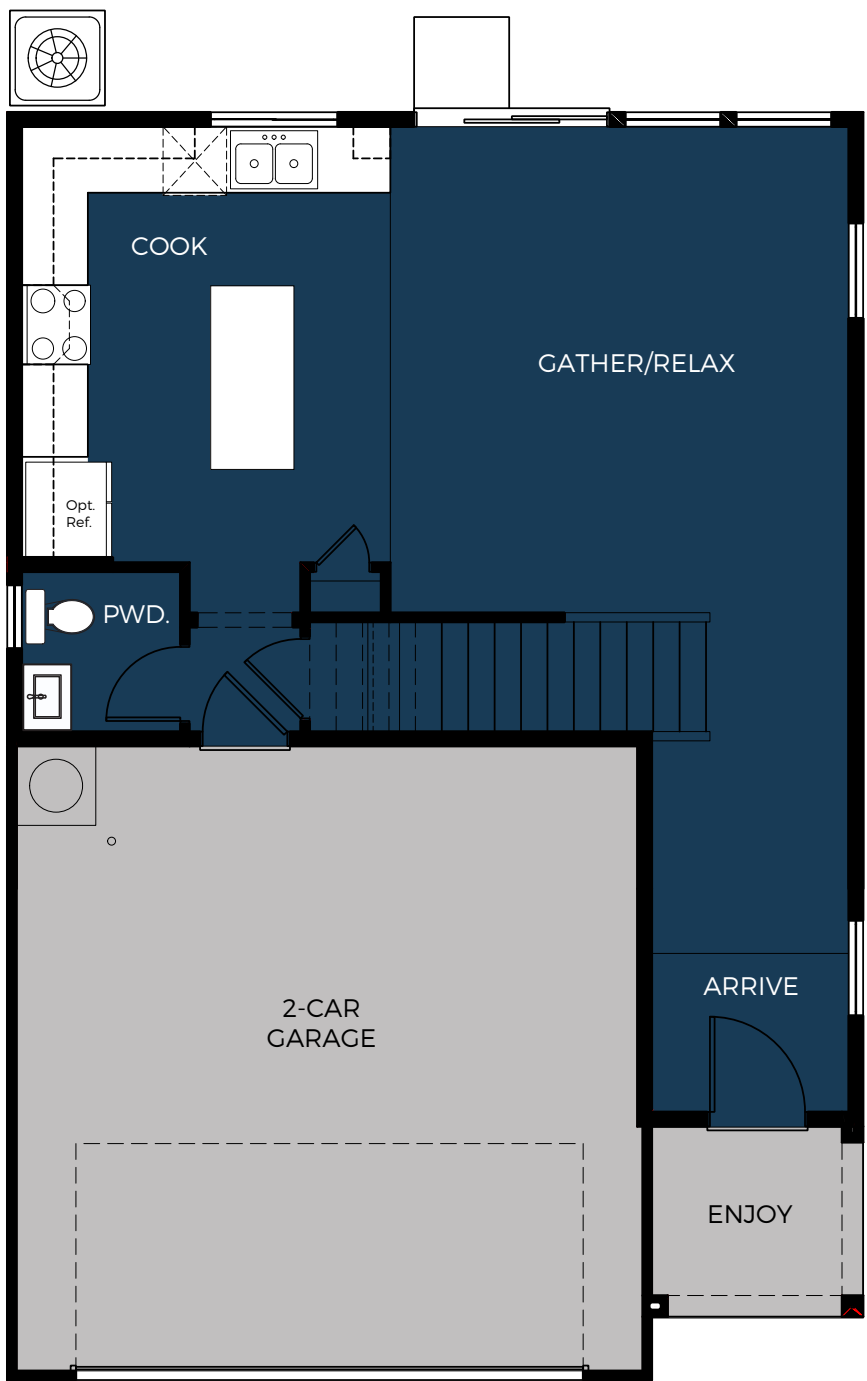


PLAN 2

THREE BEDROOMS
TWO & 1/2 BATHS
1,577-1586 SQUARE FEET
2-CAR GARAGE



First Floor



Second Floor



Brag-Worthy

GET READY TO GET TOGETHER

It starts with the stylish exterior that blends clean, classic lines to welcome you home. Step inside and you'll experience a spacious and thoughtful interior, adorned by designer selected Shaw® Floorte Luxury Vinyl Plank flooring in select, high impact areas, elegant shaker-style cabinetry, quartz countertops, dramatic Masonite® 2-panel style interior doors with Kwikset® Halifax lever door hardware.



GE APPLIANCES
a Haier company

Stainless
Steel
Appliance
Package with
Induction
Range

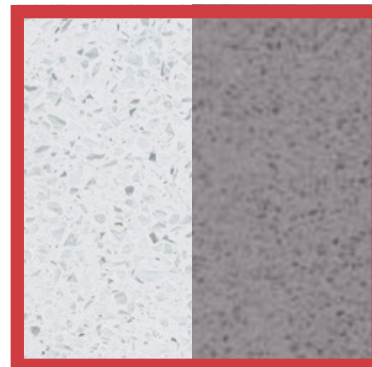
Shaker Style Cabinetry

Elegant Shaker design with optional chrome lever pulls for your kitchen and baths.

We've included GE's latest induction technology in each of the homes at Potrero. Simply place a pan on the stove and you have gas-like temperature control, but you can put butter right on the glass without burning it. It's smart technology to make your life easier.

Quartz Kitchen Counters

High style & Low maintenance in your choice of 2 included colors



FEATURES

YOUR HOME SHOULD BE AS SMART AS THE REST OF YOUR LIFE



Smart home features

- ◇ Honeywell® Z Wave Wi-Fi controlled thermostat
- ◇ Wireless doorbell camera
- ◇ Z-wave controlled front door lock
- ◇ Alarm.com® smartphone home control app
- ◇ USB charging plugs at kitchen



ALARM.COM®



SMUD®

Advanced All-electric smart home

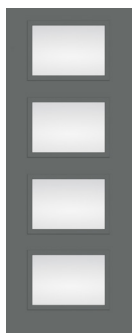
All-Electric Smart Homes take you one step closer to a renewable energy future. Efficient electric technologies for heating, hot water and cooking allow you to take advantage of renewable energy generated by SMUD to reduce dependence on fossil resources that contribute to global warming.

Benefits of an all-electric smart home

- More environmentally friendly, emitting 40% less greenhouse gases than an equivalent home powered by natural gas (saves over 1 ton of CO2 per year)
- Greater use of renewable generation
- Safer cooking technologies
- Reduced exposure to natural gas and combustion products
- You have greater control and can lower costs by taking advantage of Time-of-Day rates and demand response programs

MAKE AN
ENTRANCE

THERMA TRU®
DOORS



Kwikset



Garage door style varies per plan. See sales counselor for details.

Prices, features, availability, terms and incentives are subject to change without notice.

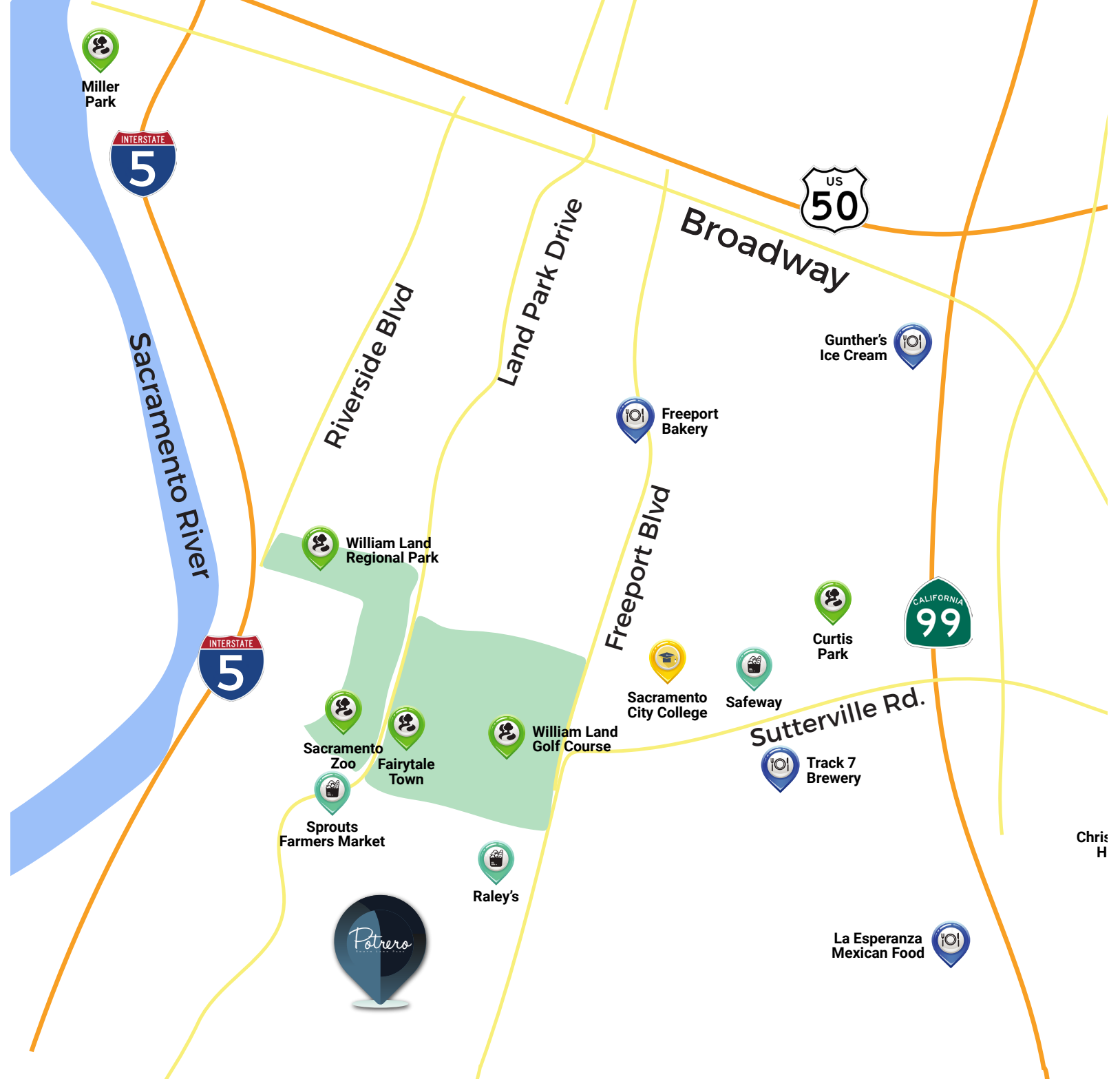
POTRERO WAY

Residence 1



Residence 2





Miller Park



Sacramento River

Riverside Blvd

Land Park Drive

Broadway



Gunther's Ice Cream



Freeport Bakery



William Land Regional Park



Sacramento Zoo
Fairytale Town



William Land Golf Course



Sacramento City College



Safeway



Curtis Park



Sutterville Rd.



Track 7 Brewery

Sprouts Farmers Market



Raley's



La Esperanza Mexican Food



Chris H

POTRERO SAC.COM

Potrero

S O U T H L A N D P A R K

Sales Information
4901 Esma Jane Ln.
Sacramento
619-846-7376

Equal Housing Opportunity Statement: We are pledged to the letter and spirit of U.S. policy for the achievement of equal housing opportunity throughout the Nation. We encourage and support an affirmative advertising and marketing program in which there are no barriers to obtaining housing because of race, color, national origin, religion, gender, sexual orientation, familial status, or disability. 08.1.23
Prices, square footages, features, availability, terms and incentives are subject to change without notice.

Sales provided by California Elite Realty | CA DRE 01997416 EQUAL HOUSING OPPORTUNITY

